

## Residential Green Building at L.B.S. Marg, Mulund, Mumbai

### Project:

3.5 lakh sq ft of Residential Development at LBS Marg, Mulund

### Image of Site:



### Features :

- 3 Residential Towers of G+35 Floors
- Green Building, registered with Leeds
- 60,000 sq ft Elevated garden with modern amenities
- 4 Level parking space
- CC already in place
- Excellent location, great connectivity

## Elevation



301 Jyoti Chambers 372 Narsi Natha Street Mumbai 400 009  
Tel : 6654 8894 Fax : 6654 8896 9833596161 9892246106

**Lobby Area:**



**Living room :**



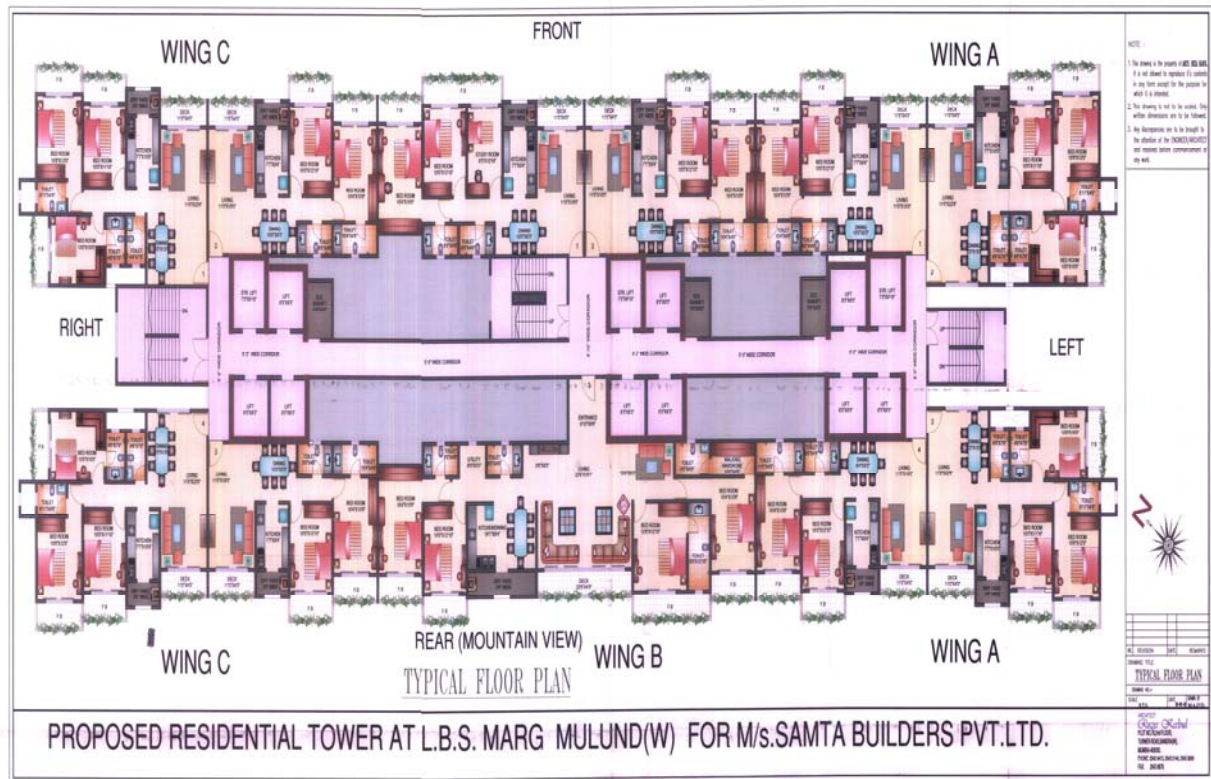
**Dining Room:**



### Proposed area :

- 2BHK 1225 sq ft
- 2<sup>1</sup>/<sub>2</sub> BHK 1450 sq ft
- 3 BHK 1510 sq ft
- 4 BHK 2850 sq ft

### Floor Plan





## **PROMOTERS' BRIEF**

### **TRANSCON GROUP**

The Transcon Group was established by Mr. Kirti Kedia in the year 1984. The thrust of the Group was in exploiting the immense potential in Real Estate Development in and around Mumbai and Thane city. The Group was able to gather a substantial Land Bank in a very short period. It had launched many prestigious projects using path breaking designs and technology much ahead of its time.

Transcon has completed various projects such as Megh, Malhar, Raag, Gagan, Gagan Shopping Arcade, Gagan Chambers, Saket, Ben Hur, Sunita Park, Prestige Garden etc totaling to about 5 million sq.ft of development.

There are various projects under development at Thane, Versova, Bandra, Mulund, Santacruz, Malad, Goregoan etc. The projects under development at present are around 6.5 million sq.ft.

### **Project Status :**

- Project Launch on 2<sup>nd</sup>. May 2010
- Completion 3 years from date

### **Proposal :**

- Rate Rs. 7,011 for 2 and 2<sup>1</sup>/<sub>2</sub> & 4 BHK
- Rate Rs. 7,155 for 3 BHK
- 40% down payment.

Balance payment as per schedule of work completed

Service Fees to Matrix at 2% of Sale Value and Applicable Service Tax



**Disclaimer:** Information transmitted by this mail and its attachments (if any) may be proprietary to Matrix Recon Pvt. Ltd. and/or to the authors of the information and are the personal opinion of the authors. Matrix Recon Pvt. Ltd. or its authors accept no personal responsibility and have no liability to any party whatsoever with respect to the contents of this communication. The email is intended for use only by the individual or entity to which it is addressed and may contain confidential or legally privileged information.

*Unauthorized use, disclosure or copying is strictly prohibited and may constitute an unlawful act.*

*All the specifications, designs, facilities, dimensions etc. are subject to approval of the respective authorities. The developers reserve the right to change the specifications or feature without notice or objection.*

*Internet communications cannot be guaranteed to be secured or error-free as information could be intercepted, corrupted, lost, arrive late or contain viruses. Matrix Recon Pvt. Ltd. therefore does not accept any liability for any loss or damage, errors, omissions, viruses or computer problems arising /experienced as a result of this transmission.*

*Information gathered and material used in this document is believed to be from reliable sources. Matrix Recon Pvt. Ltd. and/or any of its affiliates does not in any way through this material solicit any offer for purchase, sale or any financial transaction/products of any financial instrument dealt in this material.*

*All data maps provided in this communication are not to scale, indicative and subject to approval, and subject to modifications and amendments without any notice to any party.*

*This document is for information purposes only and not for solicitation. It is for private circulation and not to be distributed in countries/territories where specific permissions are required.*

*If you are not the intended recipient of this information, you are hereby notified that any use, retention, disclosure, copying, printing, forwarding or dissemination of this communication and information therein is strictly prohibited. If you have received this communication in error, please error all copies of it and its attachments and notify the company.*

*Any dispute arising out of or in connection with transactions that arise from the information provided by this document, shall be governed by and construed solely in accordance with the laws of India, without regards of the conflicts of law provision thereof, and the courts at Mumbai.*